

Eiffel Tower (Night and Day; France): Pattern

Canon ® is a registered trademark of Canon Inc. © Canon Inc. © PAOPAO. Inc



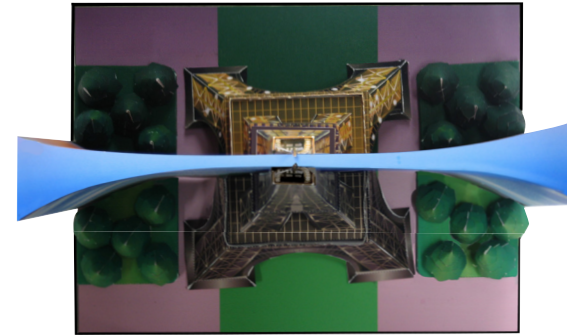
PAPER CRAFT

<http://www.canon.com/c-park/en/>

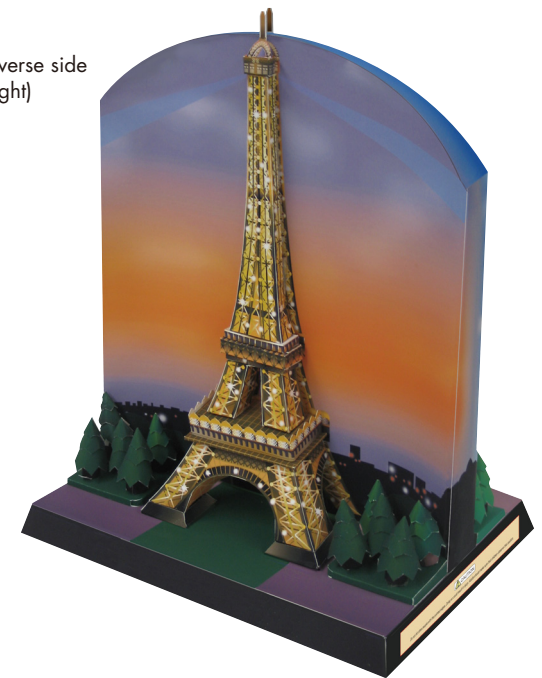
Front
(day)



Aerial view



Reverse side
(night)



View of completed model

Eiffel Tower, France

Recognized around the world as a symbol of Paris, the Eiffel Tower was built for the Paris World Exposition, held in 1889 to commemorate the 100th anniversary of the French Revolution. Named after its designer, Gustave Eiffel, plans for this 320-meter tower and its steel structure and unconventional design encountered initial resistance from devotees of Paris's historic streetscape. Today, it is a designated World Heritage Site and one of the top sightseeing destinations in Paris.

*This model was designed for Papercraft and may differ from the original in some respects.

■ Parts list (pattern): Eighteen A4 sheets (No.1 to No.18)

■ No. of Parts: 158

*Build the model by carefully reading the Assembly Instructions, in the parts sheet page order.

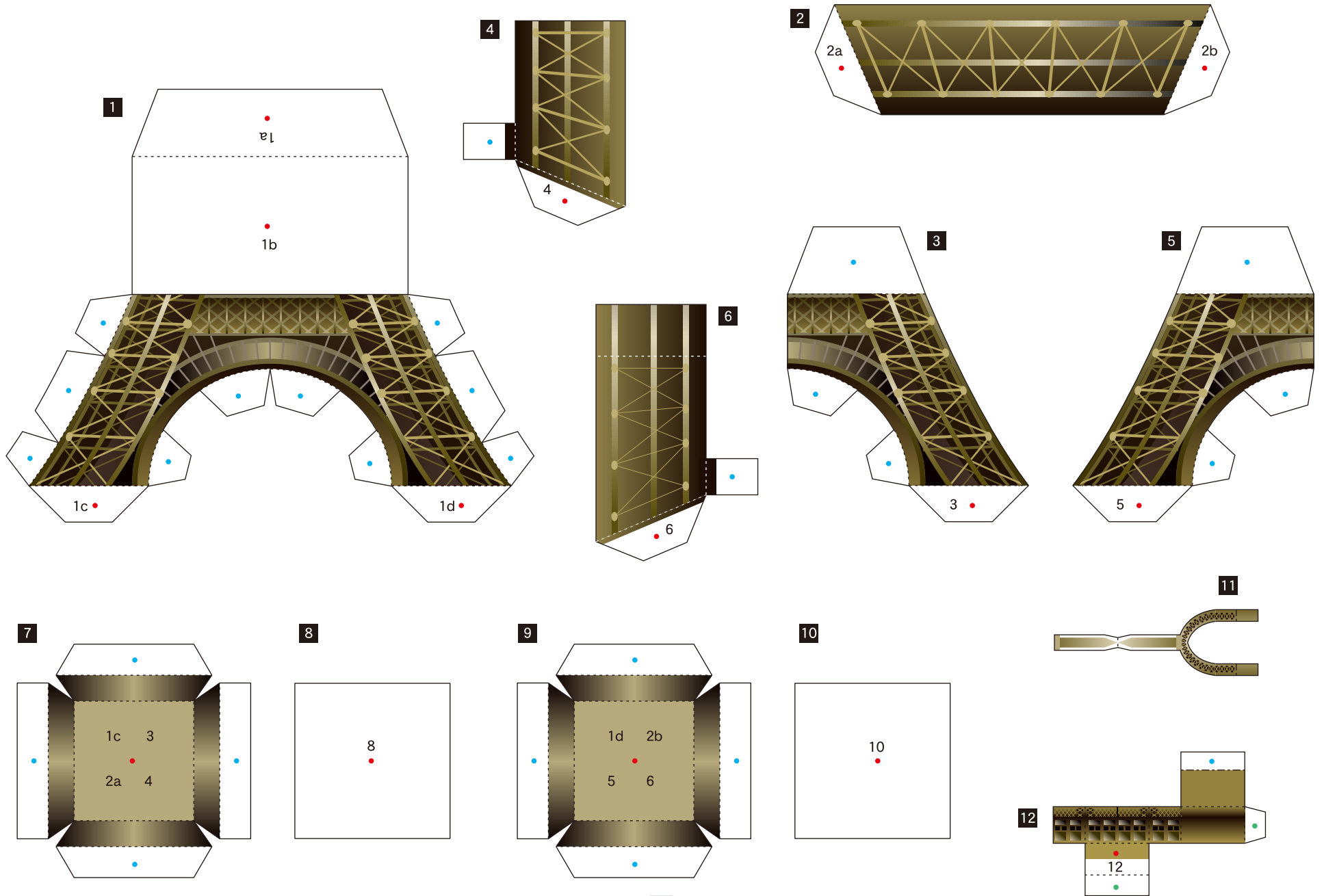
This model can be built in a total of three ways. In addition to the combined day-night model, you can build separate day and night Eiffel Tower models as well.

Eiffel Tower (Night and Day; France): Pattern

Canon ® is a registered trademark of Canon Inc. © Canon Inc. © PAOPAO, Inc



Tower (day) parts



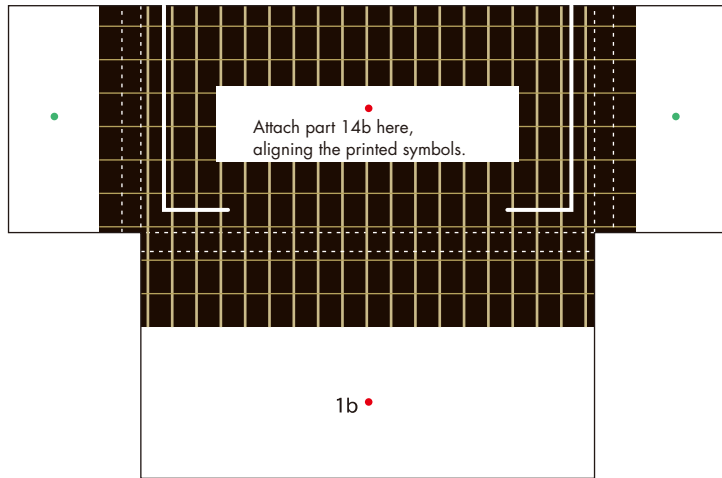
Eiffel Tower (Night and Day; France): Pattern

Canon ® is a registered trademark of Canon Inc. © Canon Inc. © PAOPAO, Inc

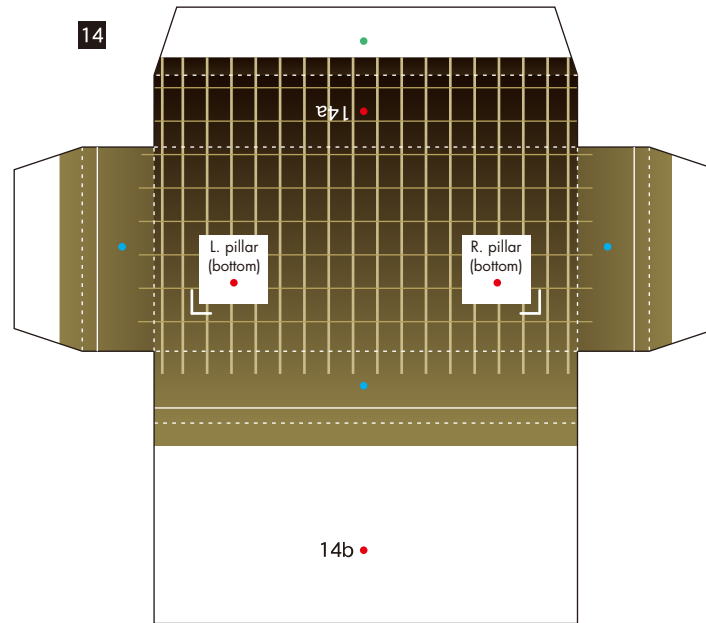


Tower (day) parts

13



14



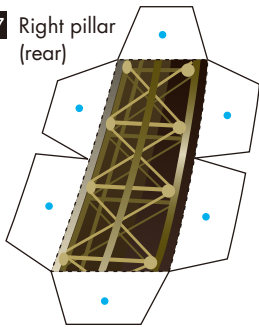
15



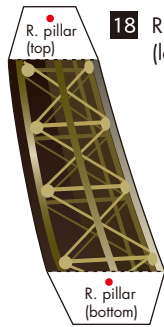
16



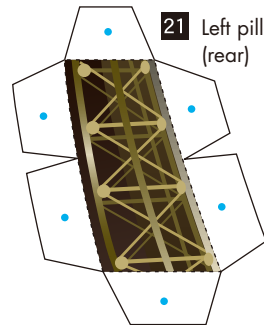
17 Right pillar (rear)



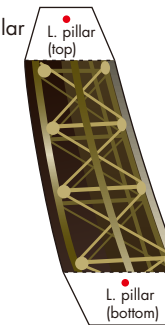
18 Right pillar (left)



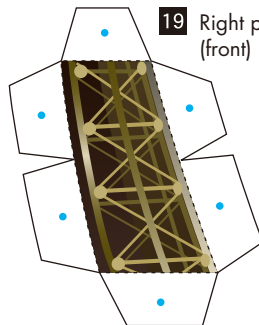
21 Left pillar (rear)



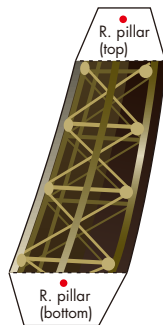
22 Left pillar (left)



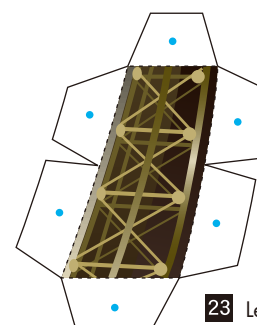
19 Right pillar (front)



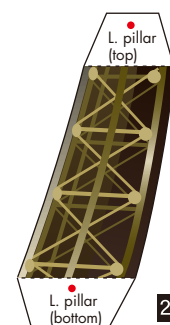
20 Right pillar (right)



23 Left pillar (front)



24 Left pillar (right)



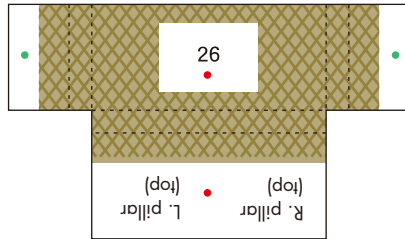
Eiffel Tower (Night and Day; France): Pattern

Canon ® is a registered trademark of Canon Inc. © Canon Inc. © PAOPAO, Inc

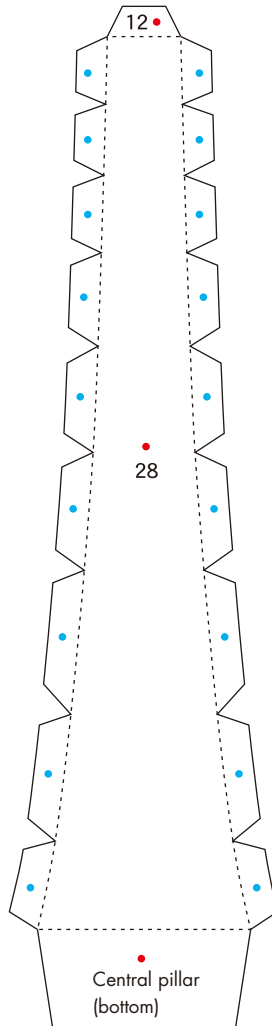


Tower (day) parts

25



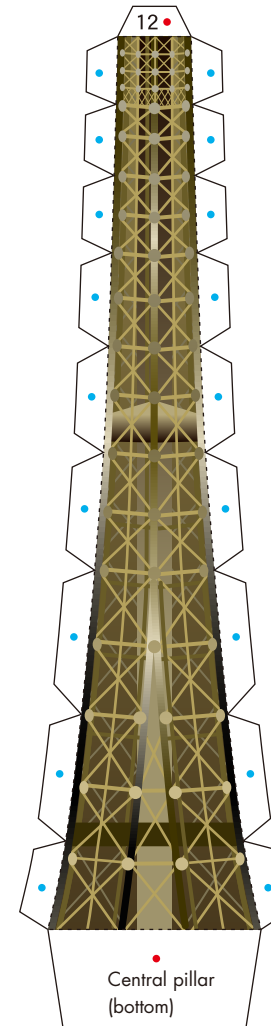
28 Central pillar (rear)



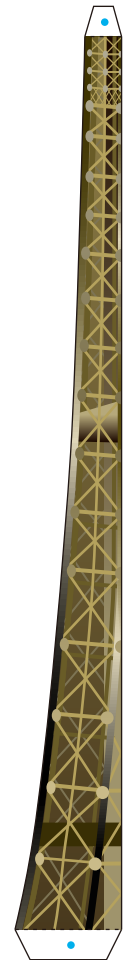
29 Central pillar (left)



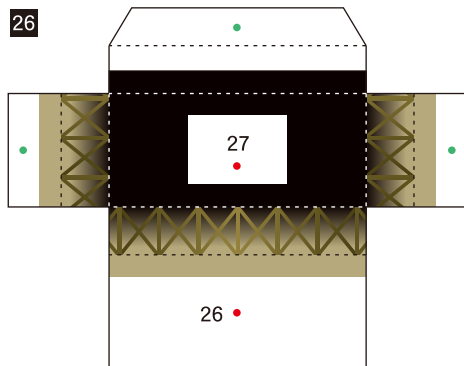
30 Central pillar (front)



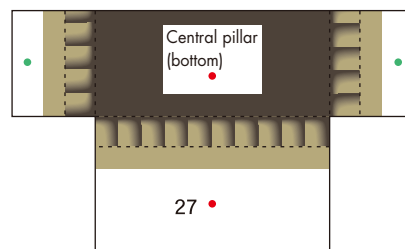
31 Central pillar (right)



26



27

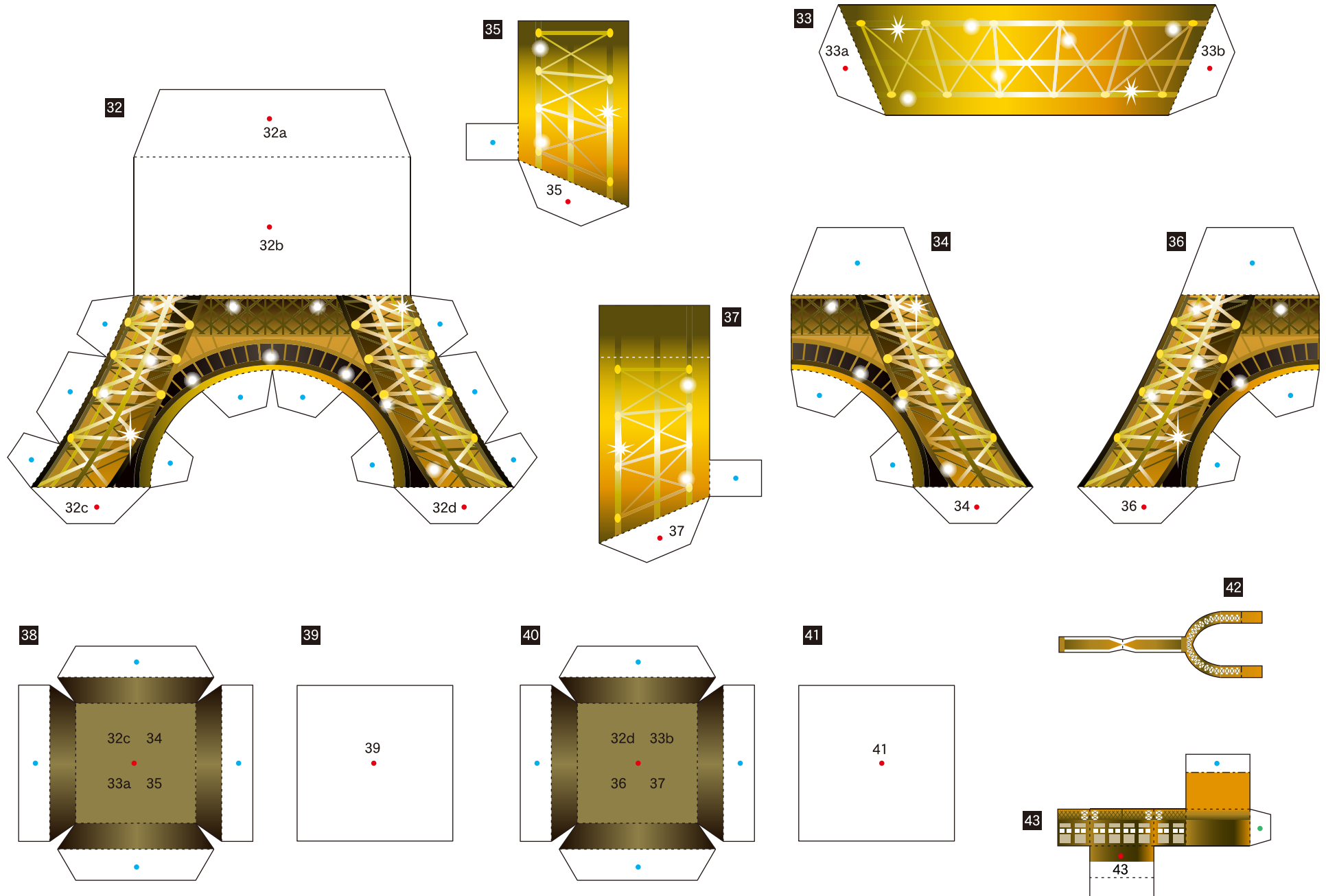


Eiffel Tower (Night and Day; France): Pattern

Canon ® is a registered trademark of Canon Inc. © Canon Inc. © PAOPAO, Inc



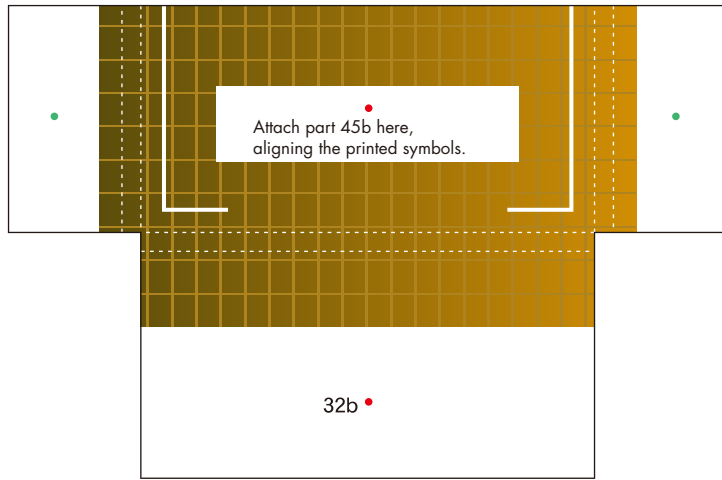
Tower (night) parts



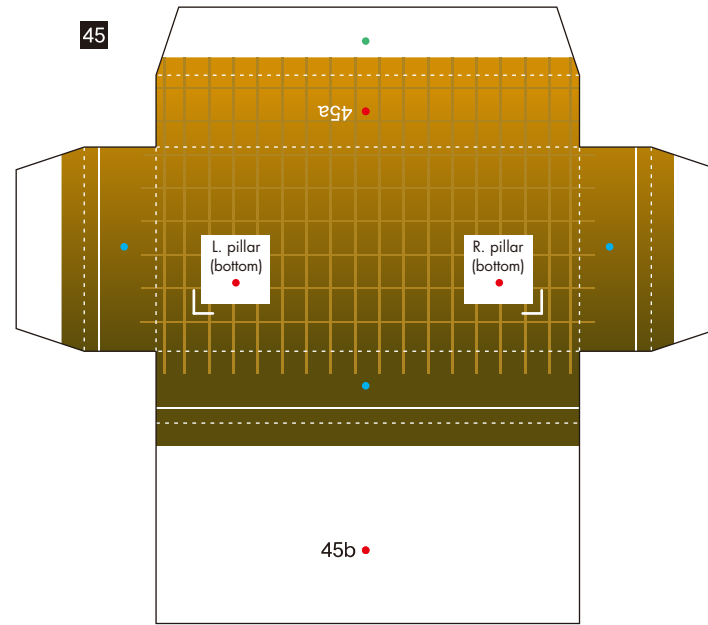
Eiffel Tower (Night and Day; France): Pattern

Tower (night) parts

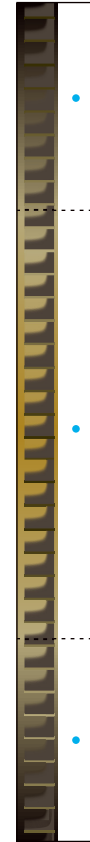
44



45



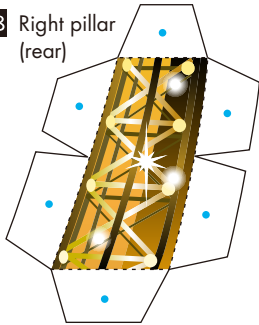
46



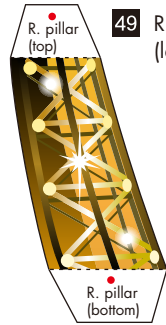
47



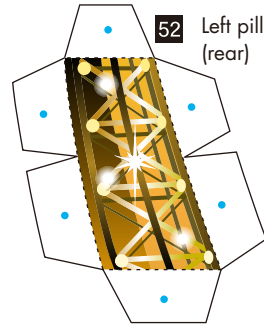
48 Right pillar (rear)



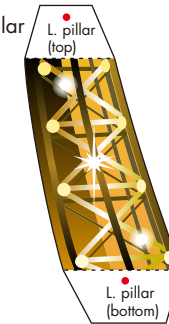
49 Right pillar (left)



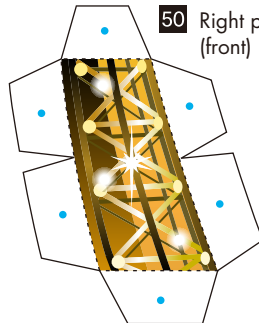
52 Left pillar (rear)



53 Left pillar (left)



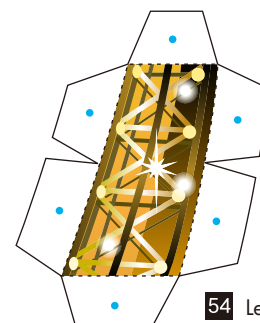
50 Right pillar (front)



51 Right pillar (right)



54 Left pillar (front)



55 Left pillar (right)



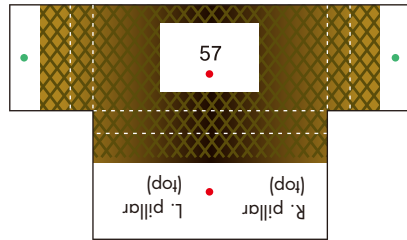
Eiffel Tower (Night and Day; France): Pattern

Canon ® is a registered trademark of Canon Inc. © Canon Inc. © PAOPAO, Inc

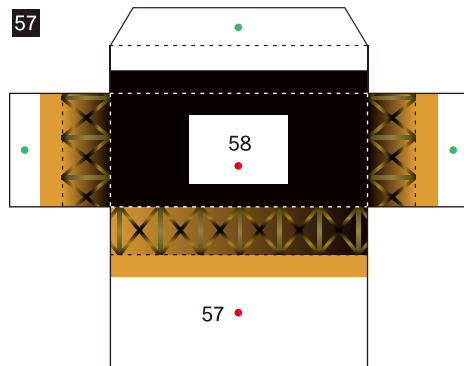


Tower (night) parts

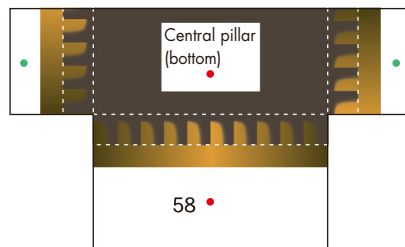
56



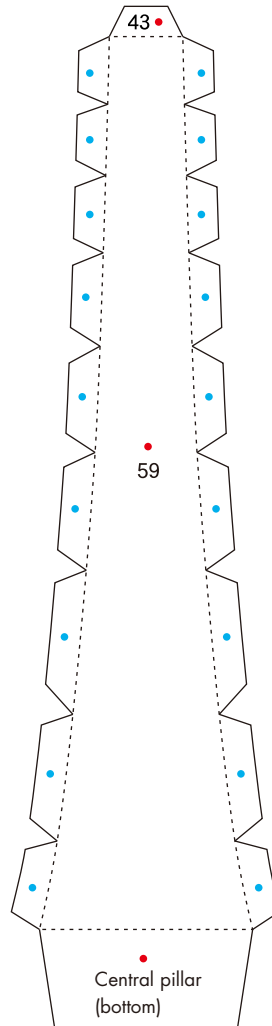
57



58



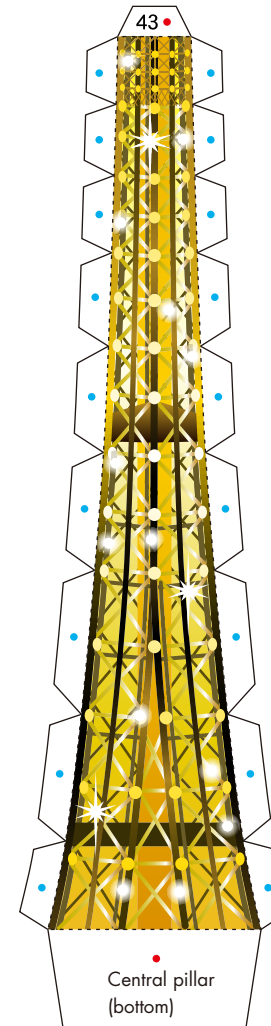
59 Central pillar (rear)



60 Central pillar (left)



61 Central pillar (front)



62 Central pillar (right)

